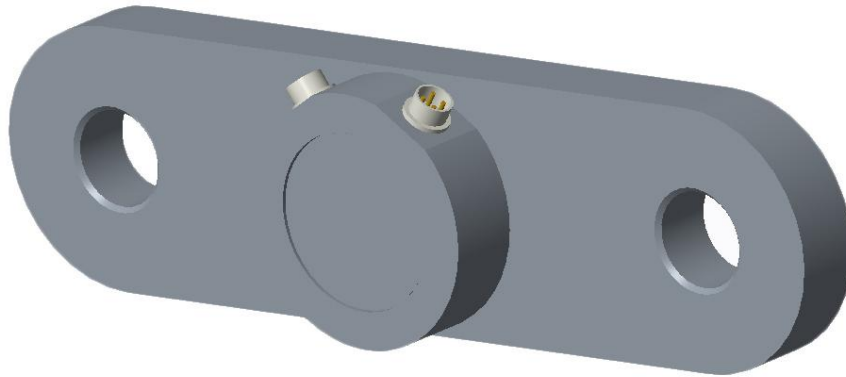


# Tension load cell series



## MAIN FEATURES

- Capacity from 7t to 300t
- Excitation 9-36V DC
- Embedded amplifiers 4-20mA
- Customized dimensions

## DESCRIPTION

ZMSY is tension load cell which is constructed of alloy steel and is potted to IP67 providing excellent protection against moisture and humidity. It perfectly fits for use in industrial applications such as high capacity crane scales and testing equipment. Own to the proven and high quality strain gauge technology and full developed amplifiers providing reliable and exact measurement. A maritime or continental finishing is offered to provide permanent corrosion protection.

## SPECIFICATIONS

PARAMETER	VALUE	UNIT
Standard capacities (E <sub>max</sub> )	7 to 300	Ton
Supply voltage	9 to 36	V DC
Rated output-R.O.	4-20	mA
Zero balance	0.5	±% of rated output
Non linearity	0.2	±% of rated output
Hysteresis	0.05	±% of rated output
Non-repeatability	0.05	±% of rated output
Creep error (30 minutes)	0.05	±% of rated output
Zero return (30 minutes)	0.1	±% of rated output
Temperature effect on min. dead load output	0.0026	±% of rated output/°C
Temperature effect on sensitivity	0.0015	±% of rated output/°C
Compensated temperature range	-40 to +80	°C
Operating temperature range	-40 to +80	°C
Safe overload	150	% of R.C
Ultimate overload	300	% of R.C
Insulation resistance	5000	Mega-Ohms
Material	Alloy steel	
Protection class	IP67	
Antiseptic paint	C5-M	

All specifications listed subject to change without notice.