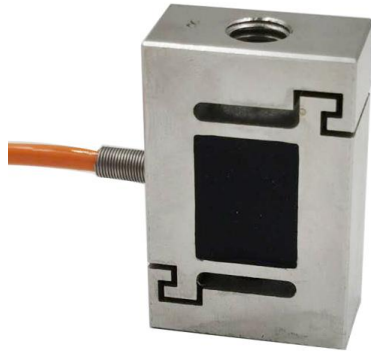


S beam load cell



Features

Capacity 0.5kg-200kg

Both tension and compression

Rational outputs

Stainless steel

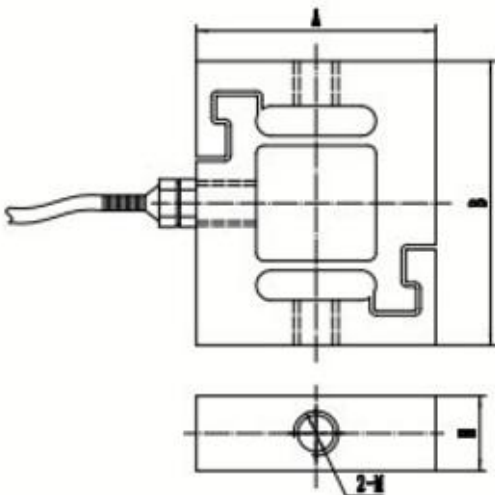
Optional features

Hermetically sealed available

DESCRIPTION

The ZMSGGA provides good restraint to possible movement of the automation and in many cases. The load cell has overload preventer which can protect sensor under extrem overloading situation. The small size gives excellent performance for high capacity loading. The output is rationalized to facilitate multiple-cell application. ZMSGGA is constructed of stainless steel and is potted to IP67 providing excellent protection against moisture and humidity.

DIMENSIONS in mm



Capacity	M	H	A	B
0.5-10	M3	5	16	19.1
20-50	M4	6	16	19.1
100-200	M8	14	26	40

Wiring diagram

+ Excitation	Red
- Excitation	Black
+ Signal	Green
- Signal	White

SPECIFICATIONS

PARAMETER	VALUE	UNIT
Standard capacities (E _{max})	0.5, 1, 10, 20, 50, 100, 200	KG
Rated output-R.O.	2.0	mV/V
Zero balance	1	±% of rated output
Non linearity	0.05	±% of rated output
Hysteresis	0.05	±% of rated output
Non-repeatability	0.02	±% of rated output
Creep error (30 minutes)	0.03	±% of rated output
Zero return (30 minutes)	0.03	±% of rated output
Temperature effect on min. dead load output	0.0026	±% of rated output/°C
Temperature effect on sensitivity	0.0015	±% of rated output/°C
Compensated temperature range	-10 to +40	°C
Operating temperature range	-20 to +60	°C
Safe overload	150	% of R.C
Ultimate overload	200	% of R.C
Excitation, recommended	10	Vdc
Excitation, maximum	15	Vdc
Input resistance	380±10	Ohms
Output resistance	350±3	Ohms
Insulation resistance	5000	Mega-Ohms
Material	Stainless steel	
Protection class	IP67	

All specifications listed subject to change without notice.